

# Light Painting Primer

Neil Bennett



*Britannia  
Mines,  
Neil Bennett*

1

## ***Topics to be Covered***

- Types of Night Photography
- Night Shooting Challenges
- Summary of Initial Camera Setup
- Shooting Protocols and Some Recommendations
- Resources
- Putting it Into Practice

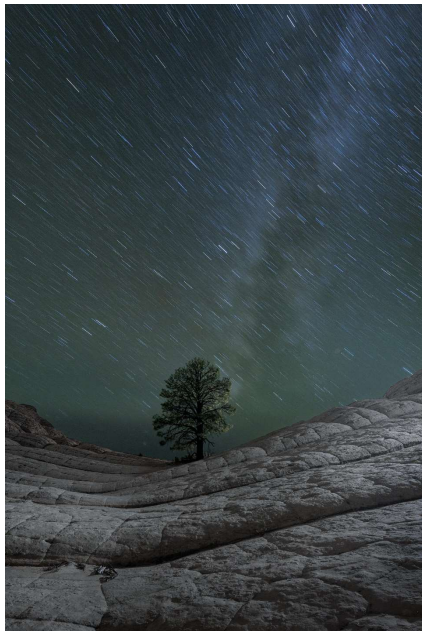
2

**Types of Night Photography ... Stars and the Moon**

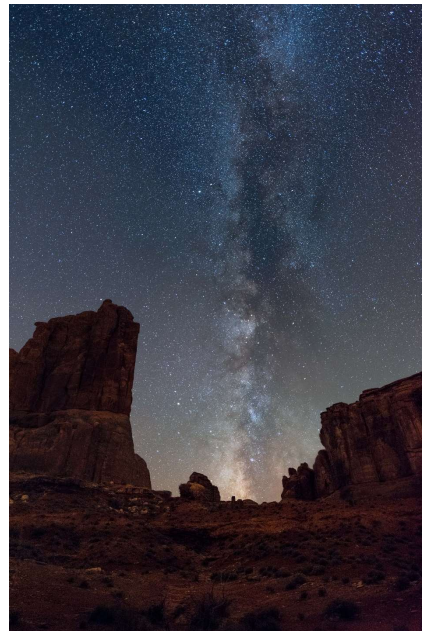


*Milky Way and  
Bristlecone,  
Neil Bennett*

3

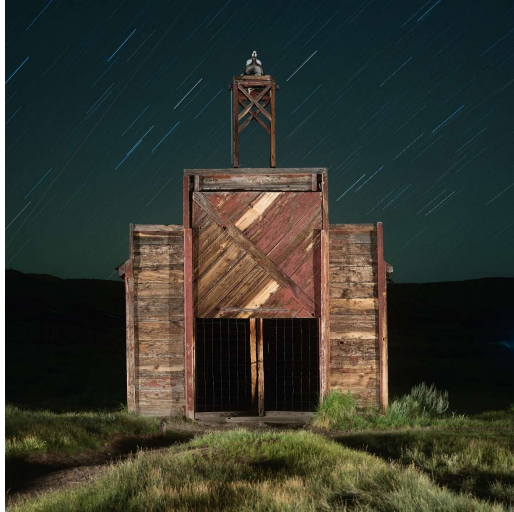


*Star Trails, Neil Bennett*



*Star Points, Neil Bennett*

4



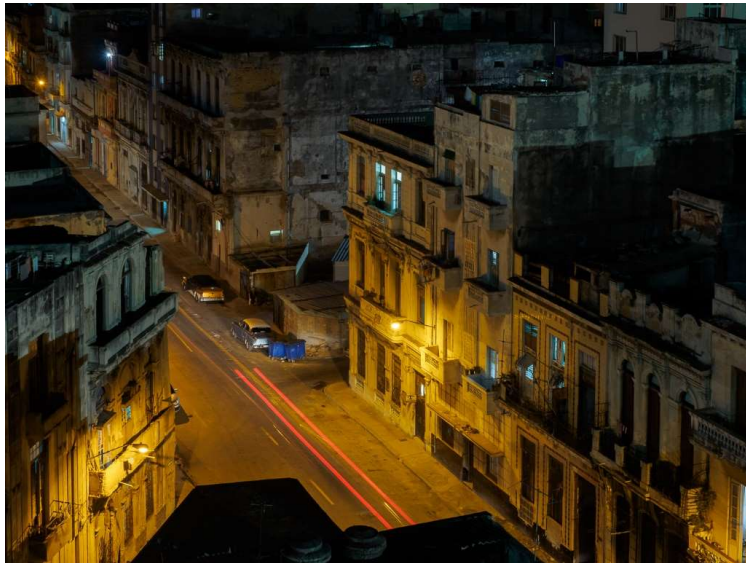
... at new moon, Neil Bennett



... at full moon, Neil Bennett

5

### **Types of Photography ... night photography in cities**



Havana at Night, Geri Boyle

6



**Types of Photography ... artificial light**



*Islands of the Dead, 1994*  
Troy Pavia

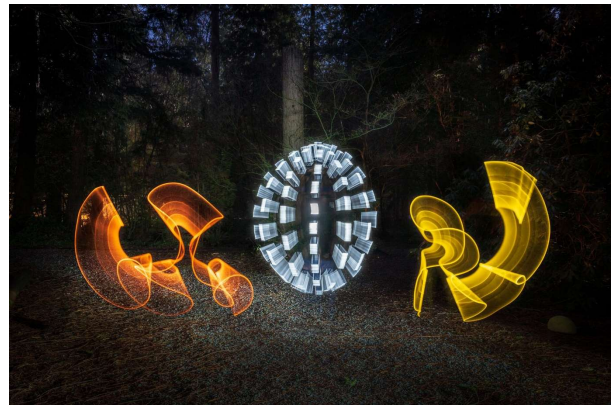
7



*Sandra Jungling*

8

***Types of Night Photography ... Toys***



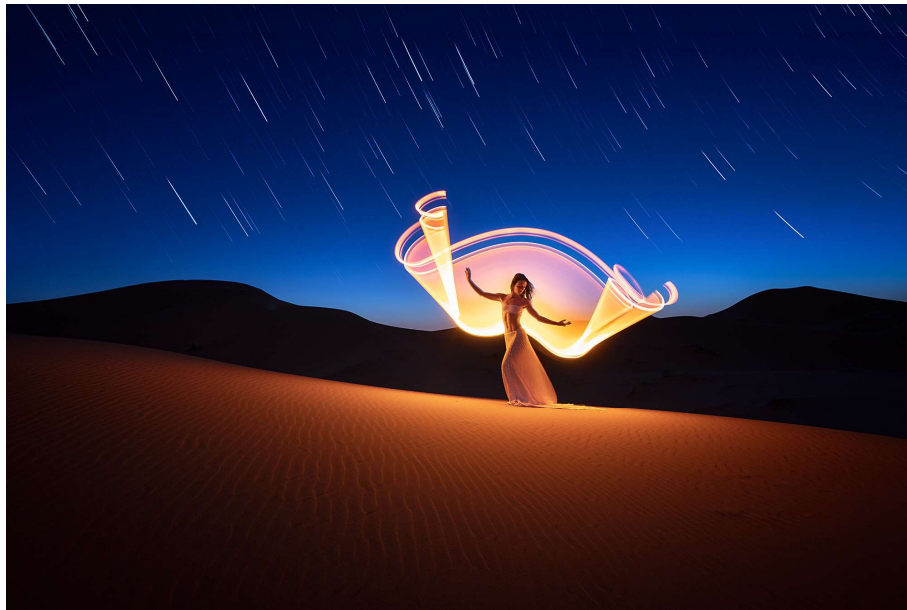
*Neil Bennett*

9



*Ball of Light Project  
Denis Smith*

10



Eric Paire  
[ericpare.com](http://ericpare.com)

11



Denis Smith  
[denissmith.com.au](http://denissmith.com.au)

12

## ***Night Shooting Challenges***

Four actions go into making any image and each has a night photography challenge:

1. **Composition** ... *how do you compose in the dark and how do you ensure the frame is full, your subject isn't cut off, etc? What effects do you want to create?*
2. **Focus** ... *how do you focus at night and how do you judge depth of field?*
3. **Lighting** ... *what lighting do you want on your subject and how do you apply it? What about 'snoot'?*
4. **Clicking the shutter** ... *a remote release or intervalometer is recommended*

13



*Image taken  
using an  
Intervalometer,  
Sandra Jungling*

14

### ***Summary of Initial Camera Setup***

- What Lens? Typically a wide-angle
- Turn the LCD brightness down to as low as it will go
- Start at an ISO that is 4 stops more than your base ISO (eg. If 100 ISO then start at 800 ISO)
- Start by focusing using Auto Focus, then switch to Manual Mode
- Start with a medium aperture of F6 to F8, depending on what you are shooting ... DoF concerns
- Typically white balance is set at AUTO
- Shoot RAW
- Exposure length can vary from seconds to minutes
- Questions?

15

### ***Shooting Protocols and Some Equipment Recommendations***

- Wear dark clothing
- When shooting in Vancouver from late fall to early spring, dress warmly, with mittens that will allow you to operate your camera.
- Temperature and dew point
- A Headlamp with red light
- Memorize the backs of your camera, so you can operate the camera in the dark
- A tripod with reflective tape on the legs, or even a small electric tea light
- If you are photographing in a group, be sure to ask if any shutters are open before turning on any light sources
- Basic Toys to get started
- Questions?

16



## **Resources**

[lightpaintingbrushes.com](http://lightpaintingbrushes.com)

[ericpare.com](http://ericpare.com)

[lostamerica.com](http://lostamerica.com)

[NationalParksatNight.com](http://NationalParksatNight.com)

[denissmith.com.au](http://denissmith.com.au)

Gabe Biderman, Night Photography: From Snapshots to Great Shots

17

## **Putting it Into Practice**

- Light Painting Fieldtrip ... Saturday February 29<sup>th</sup> about 5:15pm, weather permitting
- Email 'fieldtrips' to let us know you plan to come and we will confirm time and location
- Tonight, after coffee
  - Break into groups
  - Lights will be on for composition and focus. Once everyone is ready to go, then we will turn all the lights off so we can shoot in the dark.
  - Once images are complete then we can turn lights on and we can review the images, etc.

18